

Camdem

at Chelsea Place

2-Story | 3 Bedrooms | 2.5 Baths | Great Room | Garage



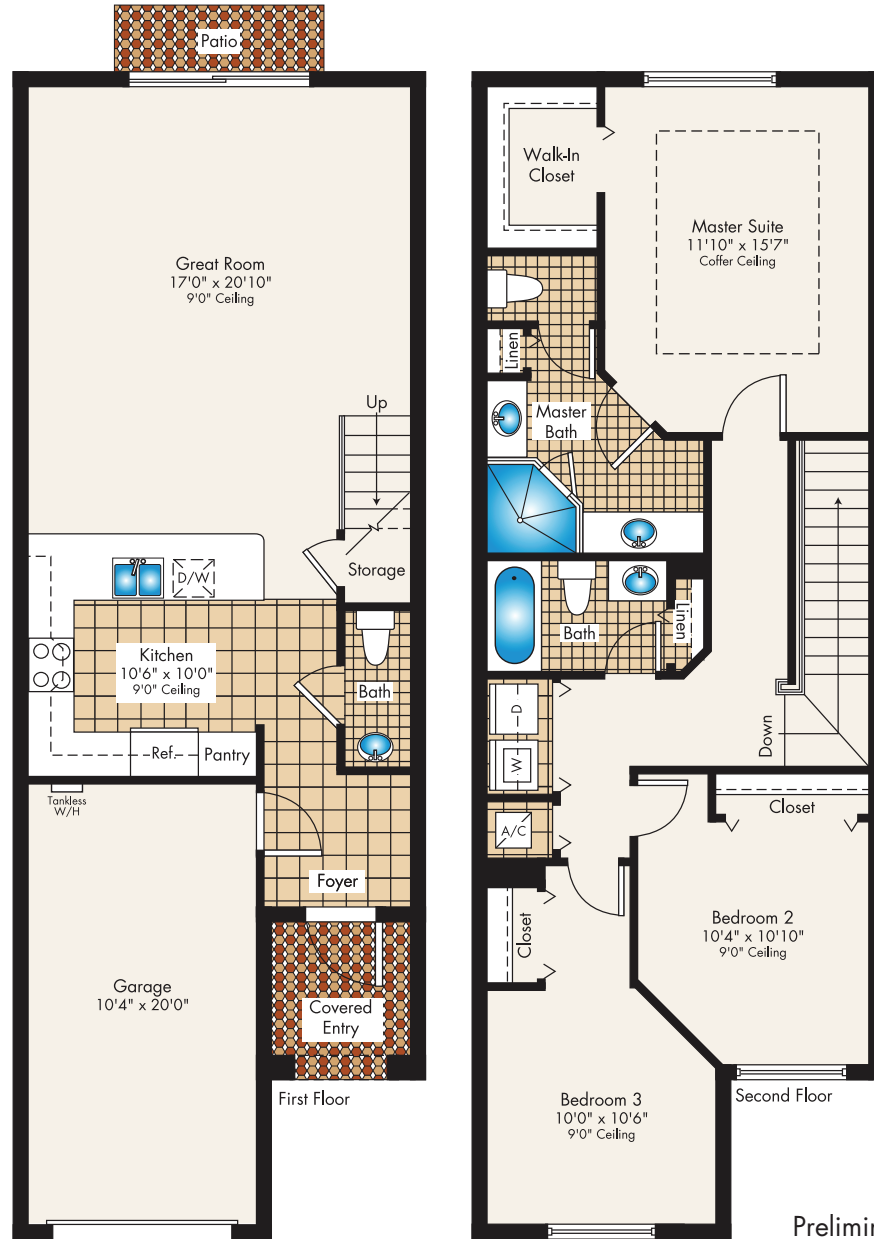
Preliminary Artist's Concept

LENNAR[®]

Camdem

at Chelsea Place

2-Story | 3 Bedrooms | 2.5 Baths | Great Room | Garage



1,532 Sq. Ft. A/C Area
 230 Sq. Ft. Garage
 47 Sq. Ft. Covered Entry

 1,809 Sq. Ft. Total

Preliminary Artist's Concept

LENNAR®

Plans and elevations are artist's renderings only, and may not accurately represent the actual condition of a home as constructed, and may contain options which are not standard on all models. We reserve the right to make changes to these floor plans, specifications, dimensions and elevations without prior notice. Stated dimensions and square footages are approximate and should not be used as representation of the home's precise or actual size. Any statement, verbal or written, regarding "under air" or "finished area" or any other description or modifier of the square footage size of any home is a shorthand description of the manner in which the square footage was estimated and should not be construed to indicate certainty. Garage sizes may vary from home to home and may not accommodate all vehicles. Copyright © 2015 Lennar Corporation. Lennar and the Lennar logo are registered service marks or service marks of Lennar Corporation and/or its subsidiaries. CGC#062343. 06/15



Kensington

at Chelsea Place

2-Story | 3 Bedrooms | 2.5 Baths | Great Room | Breakfast Area | 2-Car Garage



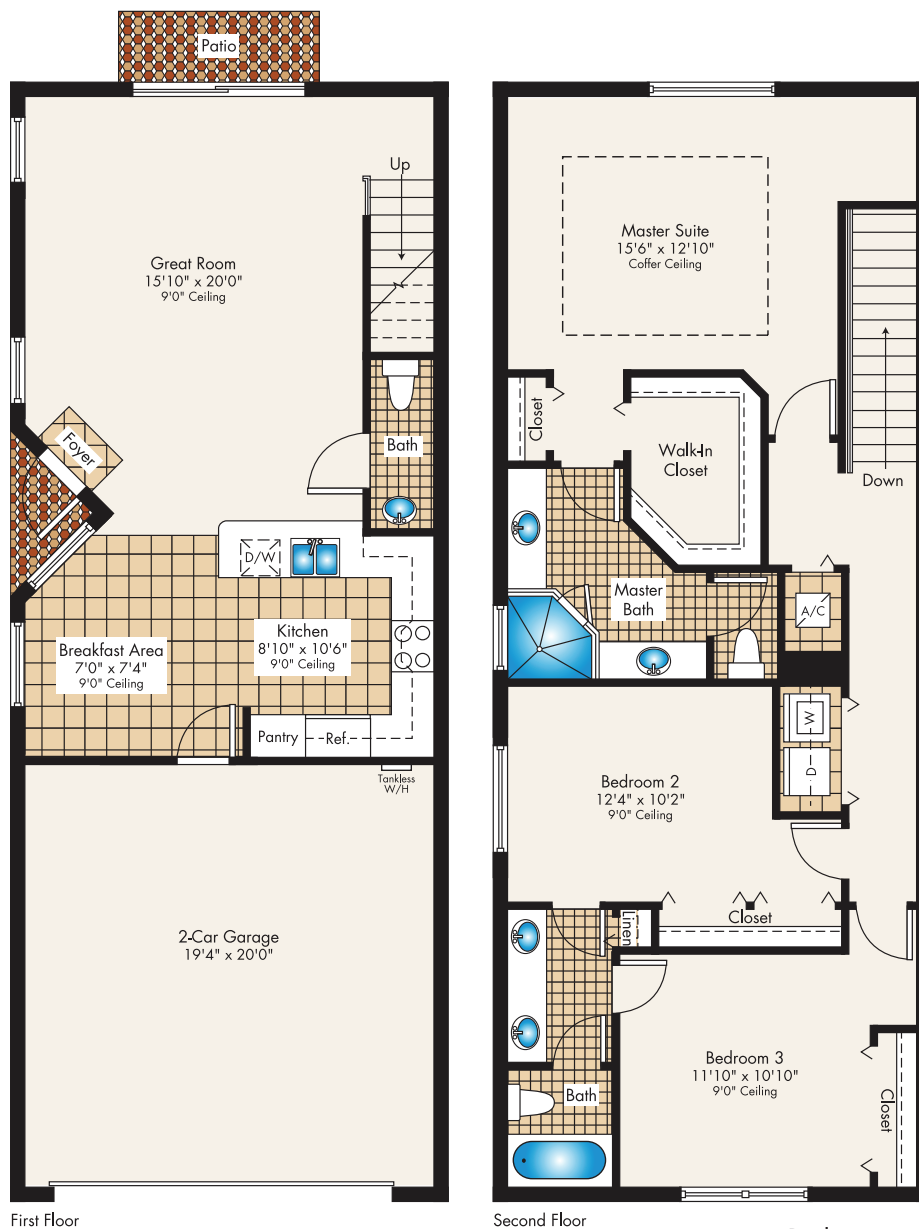
Preliminary Artist's Concept

LENNAR[®]

Kensington

at Chelsea Place

2-Story | 3 Bedrooms | 2.5 Baths | Great Room | Breakfast Area | 2-Car Garage



Preliminary Artist's Concept

1,720 Sq. Ft. A/C Area
 420 Sq. Ft. Garage
 15 Sq. Ft. Covered Entry

 2,155 Sq. Ft. Total

LENNAR®

Plans and elevations are artist's renderings only, and may not accurately represent the actual condition of a home as constructed, and may contain options which are not standard on all models. We reserve the right to make changes to these floor plans, specifications, dimensions and elevations without prior notice. Stated dimensions and square footages are approximate and should not be used as representation of the home's precise or actual size. Any statement, verbal or written, regarding "under air" or "finished area" or any other description or modifier of the square footage size of any home is a shorthand description of the manner in which the square footage was estimated and should not be construed to indicate certainty. Garage sizes may vary from home to home and may not accommodate all vehicles. Copyright © 2015 Lennar Corporation. Lennar and the Lennar logo are registered service marks or service marks of Lennar Corporation and/or its subsidiaries. CGC#062343. 06/15



Victoria

at Chelsea Place

2-Story | 3 Bedrooms | 2.5 Baths | Great Room | Breakfast Area | 2-Car Garage



Preliminary Artist's Concept

LENNAR[®]

Victoria

at Chelsea Place

2-Story | 3 Bedrooms | 2.5 Baths | Great Room | Breakfast Area | 2-Car Garage



Preliminary Artist's Concept

LENNAR®

Plans and elevations are artist's renderings only, and may not accurately represent the actual condition of a home as constructed, and may contain options which are not standard on all models. We reserve the right to make changes to these floor plans, specifications, dimensions and elevations without prior notice. Stated dimensions and square footages are approximate and should not be used as representation of the home's precise or actual size. Any statement, verbal or written, regarding "under air" or "finished area" or any other description or modifier of the square footage size of any home is a shorthand description of the manner in which the square footage was estimated and should not be construed to indicate certainty. Garage sizes may vary from home to home and may not accommodate all vehicles. Copyright © 2015 Lennar Corporation. Lennar and the Lennar logo are registered service marks or service marks of Lennar Corporation and/or its subsidiaries. CGC#062343. 06/15



Chelsea Place

ei - Features

COMMUNITY FEATURES

- Built and marketed by Lennar, one of the nation's leading homebuilders since 1954
- Community pool, cabana and tot lot
- Conveniently located near the Florida Turnpike and Sawgrass Expressway
- Created by Lennar, a Fortune 500 company, listed on the New York Stock Exchange (LEN)

INTERIOR FEATURES

- 18" x 18" ceramic tile in foyer, kitchen and laundry in a choice of decorator colors
- Plush stain resistant carpeting with padding in a choice of decorator colors
- Large Capacity Washer and Dryer (per plan)
- Raised-panel interior doors
- Raised-panel bi-fold closet doors
- Colonial-style baseboards and door trim
- Elegant interior door hardware
- Textured walls & ceilings in designated areas
- Rocker-style switches throughout
- Category 5e structured wiring for phone in kitchen only. Family Room and all bedrooms wired for cable and internet, home run to central distribution panel
- RG6 shielded coaxial television cable in all bedrooms and Family Room, home run to central distribution panel
- Pre-wired for ceiling fans in family room and all bedrooms (per plan)
- Designer quality paint on all walls and ceilings
- Custom coffer ceilings in Master suite (per plan)
- Marble windowsills throughout
- Smoke and carbon monoxide detectors throughout
- Vinyl-clad ventilated closet shelving
- Electric water heater
- Central air conditioning and heating system with programmable thermostat
- Home automation with Nexia™ Home Intelligence system with:
 - Wireless keypad lock
 - Light module
 - Programmable thermostat for central A/C and heating system
 - Camera

EXTERIOR FEATURES

- Designer exterior stone and decorative shutters
- Spanish-style concrete tile roof
- Quality CBS construction
- Colonial windows on front elevations
- Brick paver walkway, entry and terrace
- Covered entry
- Insulated entry door with chime
- Exterior hose bibs (per plan)
- Code compliant hurricane panels

KITCHEN FEATURES

- Wood finish cabinets in choice of colors with brushed nickel hardware
- Easy-care mica countertops in choice of colors
- Stainless steel kitchen sink with designer faucet
- Garbage disposal
- Quality stainless steel appliance package featuring:
 - 18 cu. ft. top freezer refrigerator
 - 30" free-standing electric range system with ceramic glass cooktop and super large oven capacity with self-cleaning system
 - Over-the-range built-in microwave with recirculating venting system
 - Built-in multi-cycle dishwasher

BATH FEATURES

- Wood finish vanity cabinets with cultured marble countertops
- Designer faucets and brushed nickel hardware
- Shower with clear enclosure in master bath
- 12" x 12" ceramic floor tile
- Exhaust fan (per plan)
- Theatrical-style lighting over vanities
- Mirrored medicine cabinet
- Oversized mirrors (per plan)

LENNAR®

The specific features in a home may vary from home to home and from community to community. Lennar reserves the right to substitute equipment, material, appliances and brand names with items of equal or higher, in our sole opinion, value. Color and size variations may occur. The prices of our homes, included features, and available locations are subject to change without notice. Please see the actual home purchase agreement for additional information, disclosures and disclaimers relating to the home and its features. Void where prohibited by law. Copyright © 2015 Lennar Corporation. Lennar and the Lennar logo are registered service marks or service marks of Lennar Corporation and/or its subsidiaries. CGC062343. 06/15



Chelsea Place

Overall Preliminary Community Site plan



Preliminary Artist's Concept

LENNAR®

Site plans and community maps are conceptual in nature and are merely an artist's rendition. These maps are solely for illustrative purposes and should never be relied upon. The past, present, future or proposed roads, easements, land uses, conditions, plat maps, lot sizes or layouts, zoning, utilities, drainage, land conditions, or development of any type whatsoever, whether reflected on the site plan or map, or whether outside the boundaries of the site plan or map, may not be shown or may be complete or inaccurate or may not change in the future. It is not uncommon that any of the foregoing can change without notice to you. You should never rely upon the accuracy of this map in making any decisions relative to purchasing any property. We reserve the right to make changes at any time without notice. Copyright © 2015 Lennar Corporation. Lennar and the Lennar logo are registered service marks of Lennar Corporation and/or its subsidiaries. CGC - 062343 06/15

