

PARQUE TOWERS



<sup>AT</sup> *St. Tropez*

# 6-STAR

personal service from  
your very first moment  
at home.



HIGHLY EVOLVED  
HIGHRISE LIVING

SURRENDER

TO THE DAILY

PLEASURE OF

ENDLESS VISTAS OF

OCEAN, WATERWAY

AND CITY VIEWS

*Southwest View*





*South View*

*Parque Towers' Atlantic Ocean Views*

THE ULTIMATE  
LUXURY LIFESTYLE  
ON THE WATER AND  
ON THE PARK



Built by **J. MILTON**  
& ASSOCIATES

*Parque Towers Gateway Park Frontage*



THE UNFORGETTABLE PARQUE TOWERS LOBBY,  
A SHOWCASE OF DRAMATIC DESIGN AND DYNAMIC FURNISHINGS AND MATERIALS





THE EUROPEAN

AMBIANCE OF THE

TOWNE CENTER

“UNSURPASSED  
SIX-STAR SERVICES  
AND PROPERTY  
FEATURES”



*Parque Towers presents a level of luxury services unlike anything ever offered within a residential environment.*

**Six-Star Concierge Services.** ★★★★★★

Living in a world-class hotel, without the impermanence, all of your needs and wishes are taken care of. Enjoy having theatre and restaurant reservations made, to arranging for dry cleaning services, as well as arranging jet charters, limo services, and appointments with top Miami physicians.



**Private Beach Club With Complimentary Shuttle Service.**



Luxuriate and relax on the sands of Sunny Isles Beach with chaise lounges, beach umbrellas, towel service, food and beverage services and personal attendants.

**The Most Technologically Advanced Security Platform.**

Including 24-hour manned security desk, complete video camera monitoring system, roving patrol, controlled access at all points of entry, and elevator fingerprint access control.



**Bespoke Valet Service.** Advance delivery of automobiles to your front door.

**Management At A Higher Level.** Parque Towers management staff is trained to the standards and procedures of five-star hotels.

**The Al Fresco Lifestyle Redefined.** Dining and full cocktails are always available at the Parque Towers poolside bistro and fine dining restaurant.



**Wellness Programs.** Individual and group programs including yoga and Pilates, personal training, and nutritional planning and guidance.

**Spa/Fitness Arena.** The newest, most advanced array of workout equipment offered in the industry today. Sauna, steam, and outdoor jacuzzi complete the spa experience.

**On-Premises Car Wash.** Enjoy the convenience of on-site car wash and detailing without ever leaving home.

**Towne Center Conveniences And Diversions.** Enjoy the upscale delights of our on-property Towne Center, featuring boutiques, bistros, and cafés—all in a spectacular setting of landscaped pathways and European-style piazzas, complete with bubbling fountains.

**Parque Towers Kids Club.** A dedicated recreational space, fully stocked with computers, toys and games for our younger residents.

**Private Rooftop Plunge Pools For Penthouses And Personal Pools For 2-Story Lanai Apartments.**

**Entertainment Clubhouse.** An exceptional event area that accommodates up to 200 of your closest friends. Includes a full catering kitchen and cocktail bar. Perfect for all your personal events.



**Private Cinema And Gameroom.** A spacious theatre for the pleasure of residents and their guests. Equipped with a full concession stand. Adjacent game room features darts, billiards, foosball table, Wii and an array of entertainment options.

**The Sunset Suite—A Wine Lovers’ Retreat.** This unique lounge offers a comfortable wine bar, cigar room and individual wine locker storage for residents.

**Executive Office Suite.** The perfect option for when an afternoon of work and the comforts of being close to home both beckon.

**Bicycle Center.** Secured storage for residents’ bikes plus on-site availability of complimentary bikes.



**Hotel-Style Guest Suites.** Beautifully designed rentable guest suites for the exclusive use of our residents’ overnight guests.



**Parque Towers—Going Green.** Environmentally responsible living.

**Private BBQ Grilling Terrace For All Your Outdoor Cooking Entertainment.**

**Five Pools.** In addition to the general pool area with sunbeds and poolside bistro, there is a jacuzzi pool, a dedicated children’s pool, a resistance pool, and an adults only lounging pool.

*The Parque Towers concept for living has evolved through consultation with some of the world’s most thoughtful and sophisticated hospitality professionals. Virtually every detail of the property features has been evaluated within the context of six-star service standards.*





*Entertainment Clubhouse*



*Resistance Pool*



*Resort-Style Pool*



*Poolside Bistro*



THE SUNSET

SUITE...

A WINE

LOVERS'

RETREAT



*Gym / Fitness Center*



*Theatre and Gameroom*

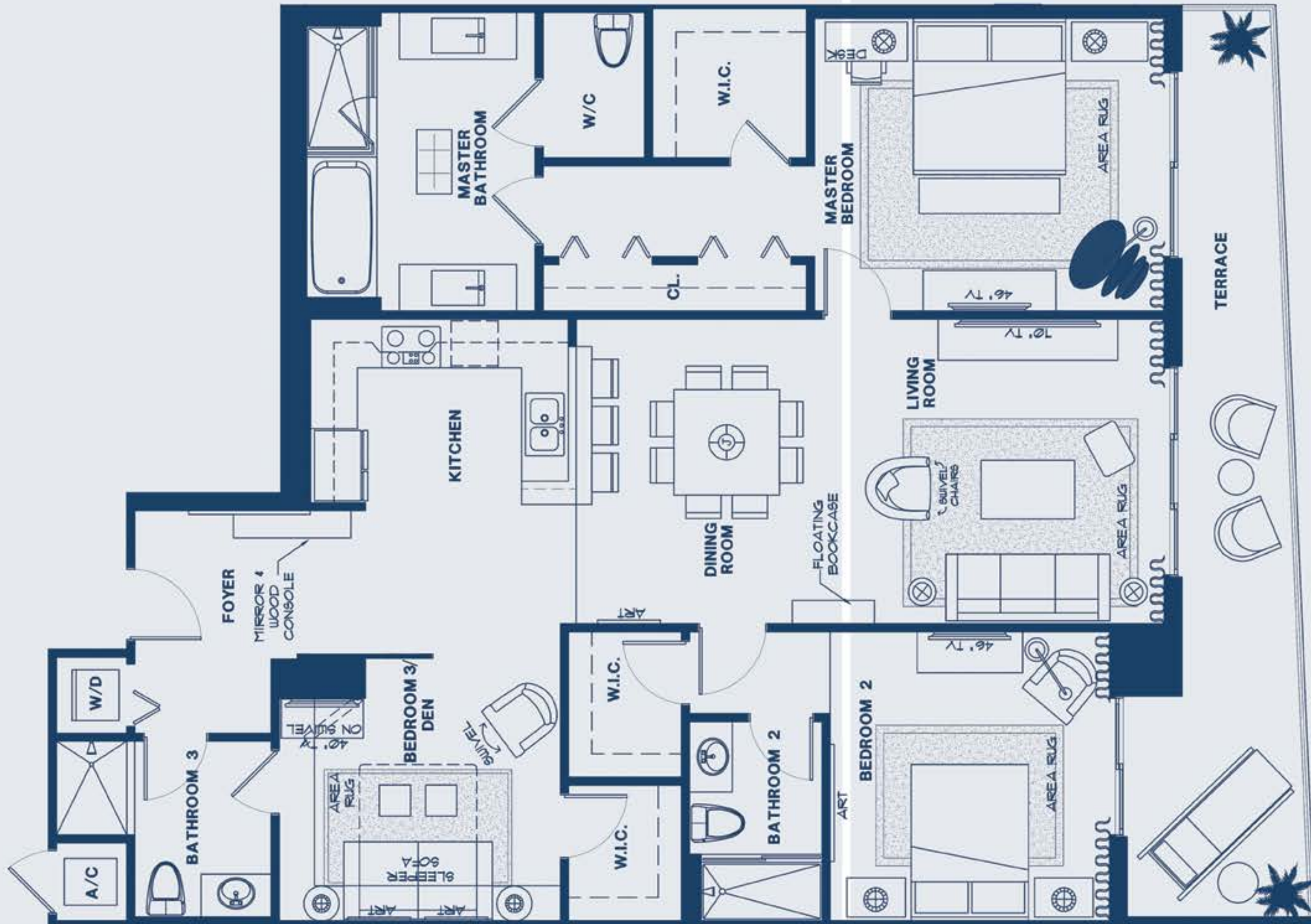


*Hotel-Style Guest Suites*



*Interactive Kids Club*





RESIDENCE A

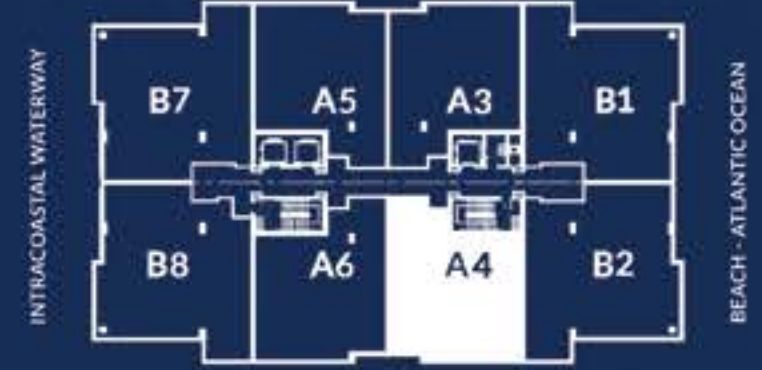
THREE BEDROOMS

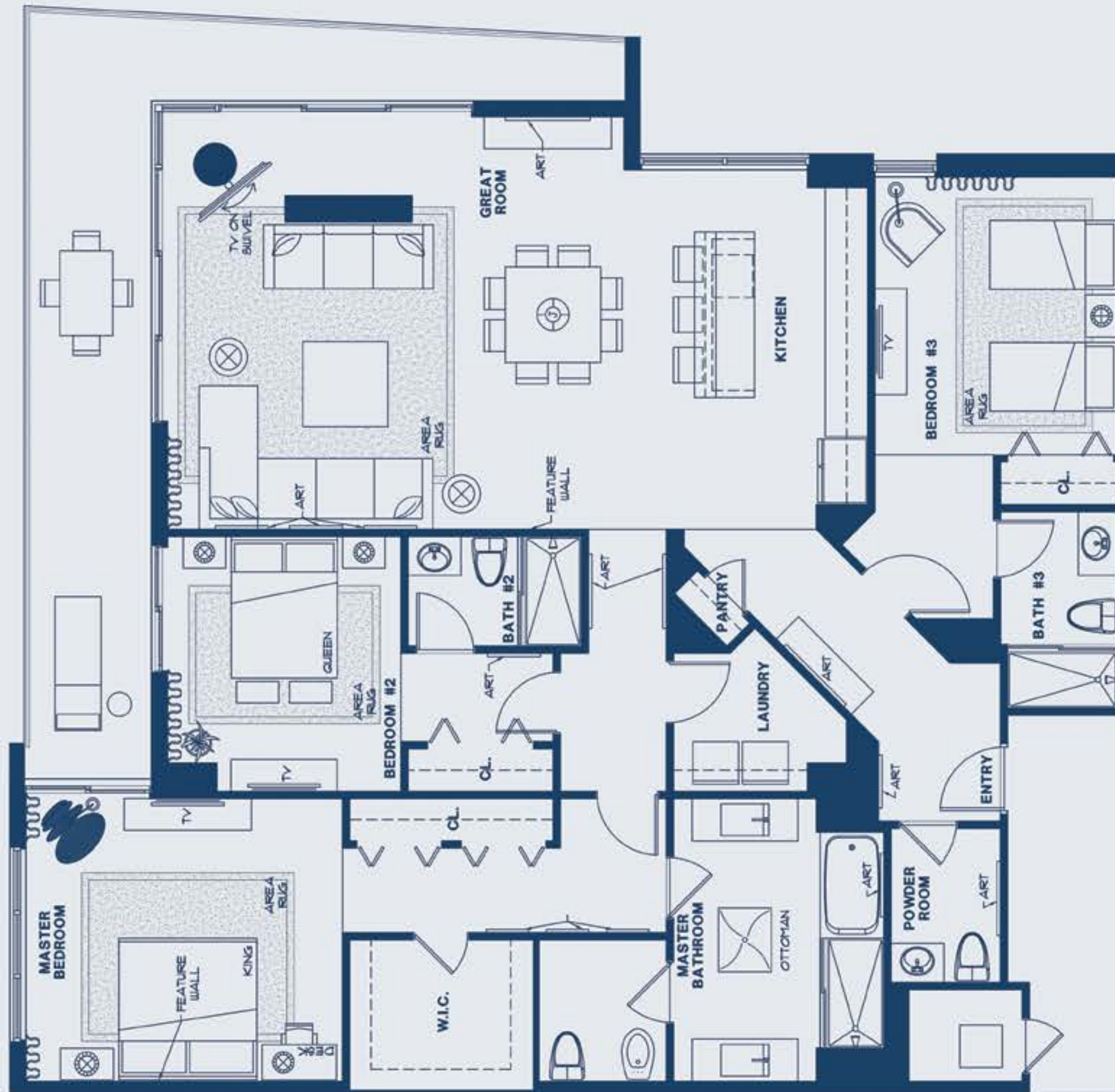
THREE BATHS

1,860 SQ. FT. APPROX.

Tower 4

SUNNY ISLES BEACH BLVD





# RESIDENCE B

THREE BEDROOMS

THREE & A HALF BATHS

2,500 SQ. FT. APPROX.





**SAVAN**  
LUXURY OCEANFRONT  
CONDOMINIUMS

*St. Tropez*  
WATERFRONT CONDOMINIUMS

PARQUE TOWERS  
*St. Tropez*

*Sandy Pointe*  
OCEAN BEACH CONDOMINIUMS

INTRACOASTAL  
YACHT CLUB  
WATERFRONT LUXURY RENTALS

KING  
DAVID  
LUXURY CONDOMINIUMS

PINNACLE  
LUXURY OCEANFRONT LIVING

CITY OF SUNNY ISLES BEACH  
PORTFOLIO

On a single stretch along and adjacent to Collins Avenue, a complete collection of ten significant J. Milton & Associates residential developments have been created, successfully marketed and are presently valued at over \$2 billion. An additional \$500 million in real estate development is committed and scheduled for completion over the next six years just in the City of Sunny Isles Beach alone.

**M**  
J. MILTON  
& ASSOCIATES



**Phase III**  
Planned Office Building  
Sunny Isles Beach, Florida



**J. MILTON**  
& ASSOCIATES

SOUTH FLORIDA'S PREMIER REAL ESTATE DEVELOPER

As a vertically integrated corporation, J. Milton & Associates performs its own land acquisition and planning, construction, financing, and sales and marketing. Every step of every project is subjected to rigorous value engineering, and senior management is involved in every decision.

Hands-on involvement and meticulous attention to detail are hallmarks of the J. Milton & Associates development philosophy, enabling the delivery of quality communities that consistently surpass the company's own high standards.

[WWW.J-MILTON.COM](http://WWW.J-MILTON.COM)



