



BOTANIKO

WESTON

BOTANIKO

WESTON

PEDRO MARTIN & DAVID MARTIN
TERRA GROUP

“BOTANIKO WESTON
WILL OFFER A
SOPHISTICATED COLLECTION
OF 125 ARCHITECTURALLY
DISTINCTIVE HOMES
WITHIN THE EXCEPTIONAL
COMMUNITY OF WESTON.
DESIGNED BY ARCHITECTS
CHAD OPPENHEIM AND
RONEY J. MATEU, FAIA, AND
LANDSCAPE ARCHITECT
JEFRÉ, IT WILL BE A
TIMELESSLY ELEGANT GATED
COMMUNITY ALONG
THE HISTORIC FLORIDA
EVERGLADES.”

A premiere masterplanned community.

W
E
S
T
O
N
F
L
O
R
I
D
A

An inviting landscape for life well lived.



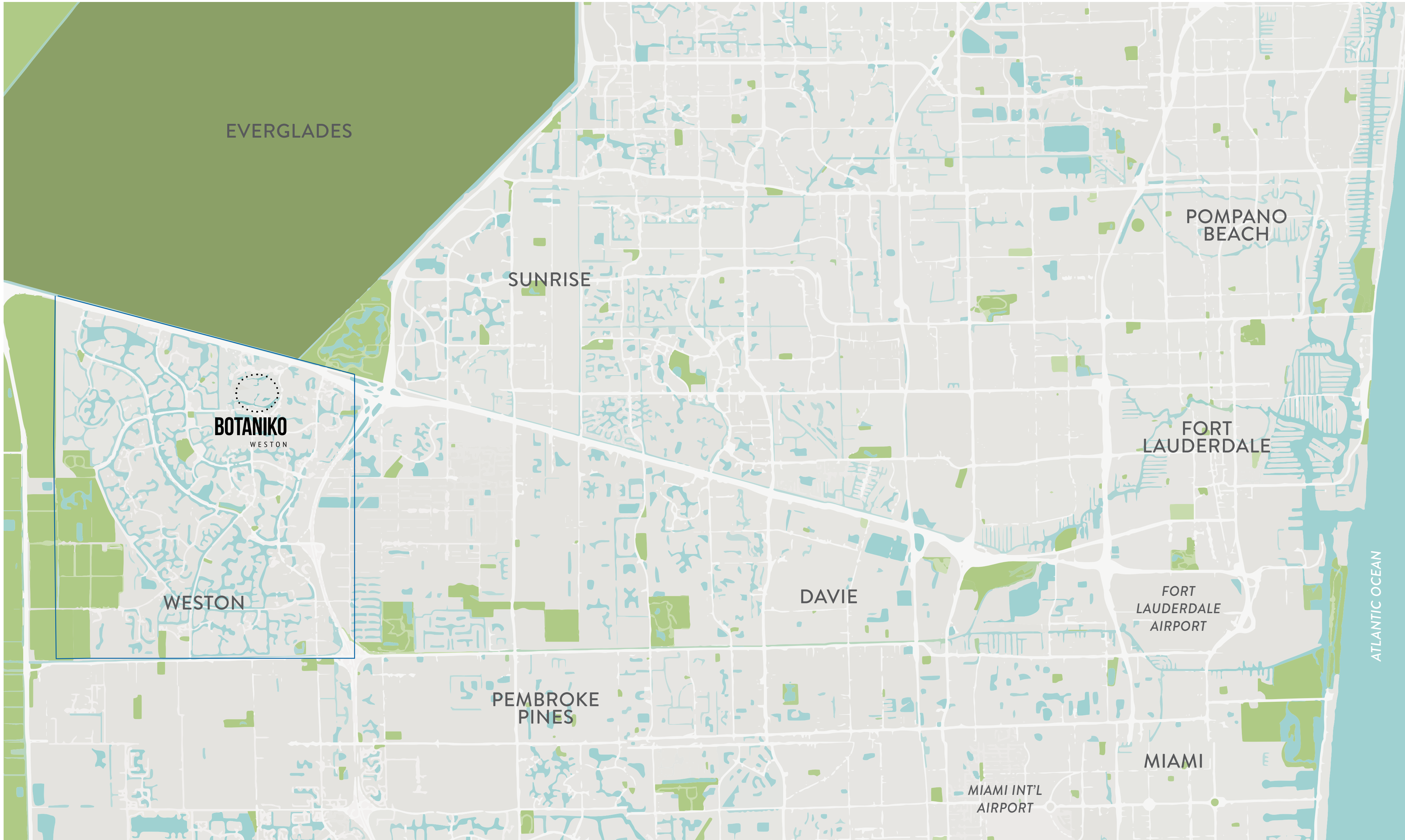
IMAGINE A PLACE
OF SIMPLE PLEASURES
AND NATURAL BEAUTY ...
A PLACE TO BUILD
MEMORIES THAT WILL
LAST A LIFETIME
– THIS IS WESTON.

Set along the edge of Florida's Everglades National Park, with over 2,200 acres of wetland preserves that support a diverse ecological population, the exclusive community of Weston brings nature's finest gifts together with a dynamic lifestyle and an outstanding level of security. Ranked #15 of the Best Places to Live in America, it is a place to build a lifetime of memories in the most inviting landscape.

Residents of Weston enjoy access to fourteen meticulously maintained park and recreational facilities, a rich array of year-round cultural and community events, and a beautiful Mediterranean-style Town Center with shopping, dining, and nightlife experiences. They also enjoy the peace of mind that comes from living in a community that boasts the lowest crime rate per capita in the County.







EVERGLADES

SUNRISE

POMPANO
BEACH

BOTANIKO
WESTON

FORT
LAUDERDALE

WESTON

DAVIE

FORT
LAUDERDALE
AIRPORT

ATLANTIC OCEAN

PEMBROKE
PINES

MIAMI

MIAMI INT'L
AIRPORT



With parks, bike paths, and one of the best soccer academies in the region, Weston is ideal for the sporting lifestyle.



Top-rated public and private schools and fully equipped equestrian facilities are among the community's many desirable amenities.





B
O
T
A
N
I
K
W
E
S
T
O
N

Welcome to your exclusive gated enclave.

A place of simple pleasures and natural beauty.

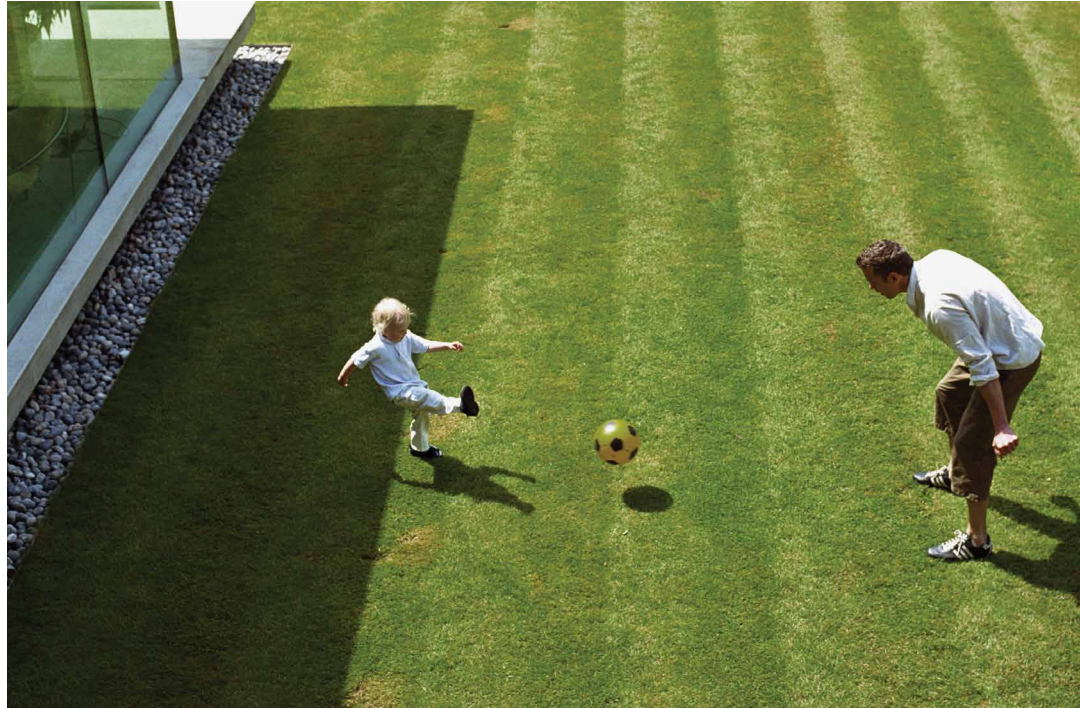
MASTERPLANNED AND LUSHLY LANDSCAPED BY ACCLAIMED DESIGNER JEFRE, THE GATED COMMUNITY OF BOTANIKO WESTON WILL OFFER A TRANQUIL SANCTUARY OF WINDING RESIDENTIAL STREETS, JOGGING AND BIKING PATHS, REFRESHING LAKES, AND LIVELY WATER FEATURES.

Now under development, the gated community of Botaniko Weston is inspired by the beauty and tranquility of Weston, which has been acclaimed for its exceptional quality of life. From artful landscaping to the clean, modern lines of the residential architecture, Botaniko Weston will build on this heritage while introducing a new level of contemporary sophistication.



COME HOME TO A PLACE AS SECURE AS IT IS NATURALLY BEAUTIFUL

Elegant and private, the 100-acre community of Botaniko Weston will feature a network of walking, jogging, and biking paths as well as charming pocket parks. While Weston is renowned for its peaceful ambiance, residents will enjoy the added measure of security provided by a gatehouse that is staffed 24 hours a day with security cameras and state-of-the-art closed circuit television.





A vertical photograph of a pond at dusk. The water is dark blue, reflecting the sky and the silhouettes of trees. In the upper right, there are several large, vibrant green lily pads. A large, white and pink koi fish is swimming in the middle of the pond. The lower left shows the tail of another koi fish, which is orange and white. The overall mood is peaceful and elegant.

B
O
T
A
N
I
C
H
O
K
M
O
E
S

Modern, yet warm and timeless elegant.

Designed for the pleasure of indoor-outdoor living.

DESIGNED BY AWARD-WINNING ARCHITECTS CHAD OPPENHEIM AND RONEY J. MATEU, FAIA, BOTANIKO WESTON'S UNIQUE SELECTION OF ONE- AND TWO-STORY HOMES, RANGING FROM 4,200 TO 7,200 SQUARE FEET, WILL BE LUXURIOUS INSIDE AND OUT.

EVERY HOME WILL OFFER EXTRAORDINARY OUTDOOR ENTERTAINMENT SPACE, A PRIVATE POOL, SUMMER KITCHEN, AND A FULL SUITE OF PREMIUM APPLIANCES, AMONG A HOST OF OTHER EXCEPTIONAL FEATURES.



BOTANIKO
WESTON

CHAD OPPENHEIM
OPPENHEIM ARCHITECTURE+DESIGN

“FOR BOTANIKO WESTON,
WE CREATED ARCHITECTURE
THAT CELEBRATES THE
TROPICAL ENVIRONMENT,
HOMES THAT ARE TRULY
CRAFTED IN EVERY DETAIL
FOR INDOOR-OUTDOOR LIVING.
LIGHT, WATER, AND
SKY ARE AS INTEGRAL
TO THE DESIGN AS THE
RICH MATERIALS USED.”

Inspired by the South Florida lifestyle, Oppenheim's architecture is a celebration of the garden and a stage for the enjoyment of special moments with family and friends.



OPPENHEIM RESIDENCES

ARTIST'S CONCEPTUAL RENDERING

The most cherished elements of a traditional home have been reinterpreted and made modern with beautiful wood, stone, and glass – this is dramatic architecture that is also warm and inviting.



OPPENHEIM RESIDENCES

RONY J. MATEU, FAIA
MATEU ARCHITECTURE

“BY EMPLOYING A
MINIMALIST VOCABULARY
OF MODERN FORMS,
WE LET THE TROPICAL CLIMATE
AND LANDSCAPE – AND
THE LIFESTYLE THEY HAVE
ENGENDERED – COME
TO THE FOREGROUND,
WITH OUR BUILDINGS
AS A FRAMEWORK
FOR THE RITUALS
OF DAILY LIFE.”

With walls of glass, polished concrete floors in public spaces,
and hardwood floors in bedrooms, MATEU'S architecture is modern
and functional, yet expressive and warm.



MATEU ARCHITECTURE RESIDENCES

ARTIST'S CONCEPTUAL RENDERING



MATEU ARCHITECTURE RESIDENCES

By borrowing visually from the outside and designing interiors that take advantage of cubic square footage, Mateu's architecture offers a dramatic sense of space and light.

ARTIST'S CONCEPTUAL RENDERING

R
E
N
O
W
N
E
D
T
A
L
E
N
T

Renowned architects and designers.

The best design, art, and architecture.

OPPENHEIM ARCHITECTURE + DESIGN

THE ENVIRONMENT IS THE CENTRAL INSPIRATION BEHIND
OPPENHEIM'S WORK, WHETHER THE FIRM IS DESIGNING LUXURIOUS
HOSPITALITY PROPERTIES OR ONE-OF-A-KIND HOMES

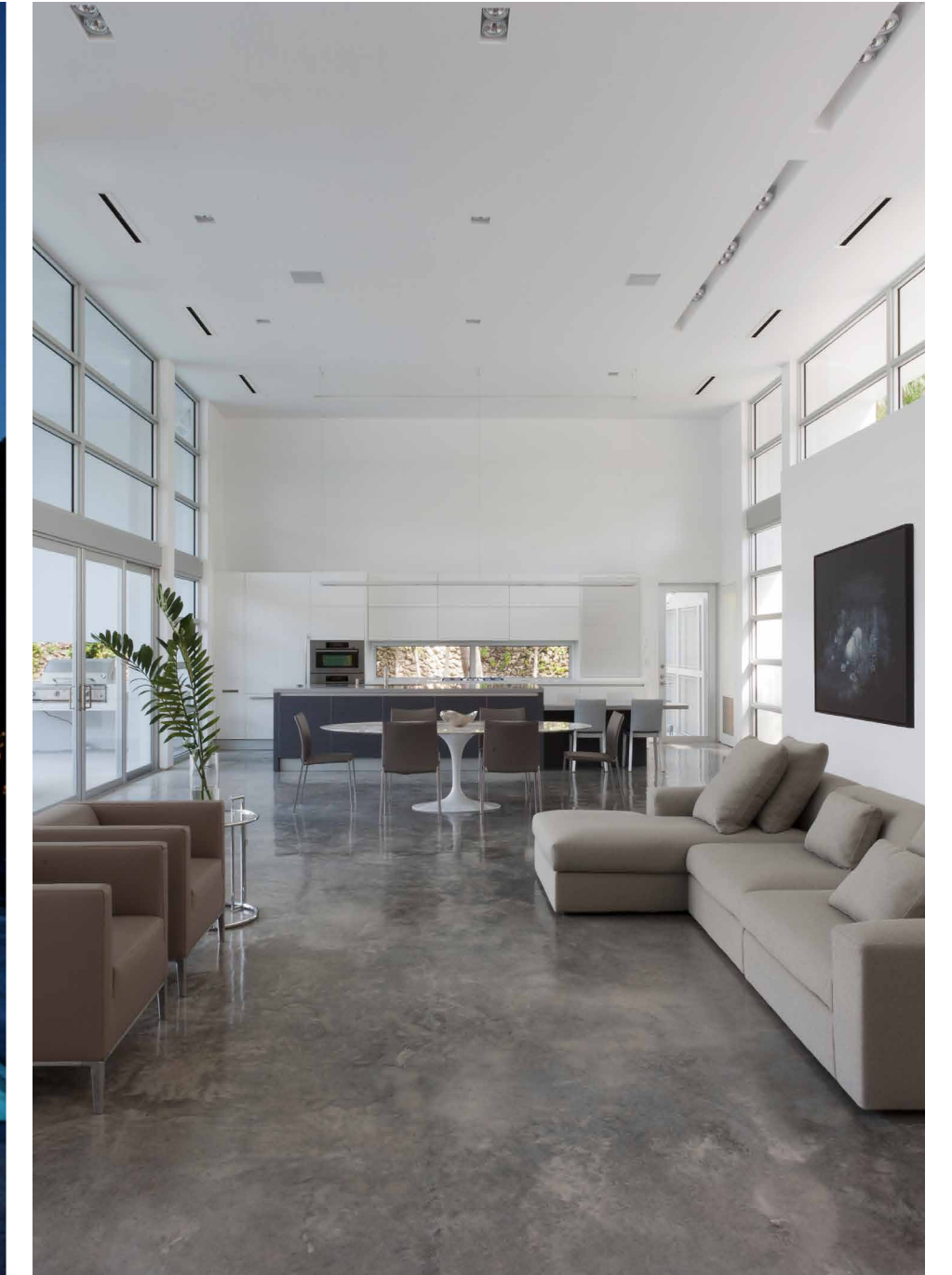
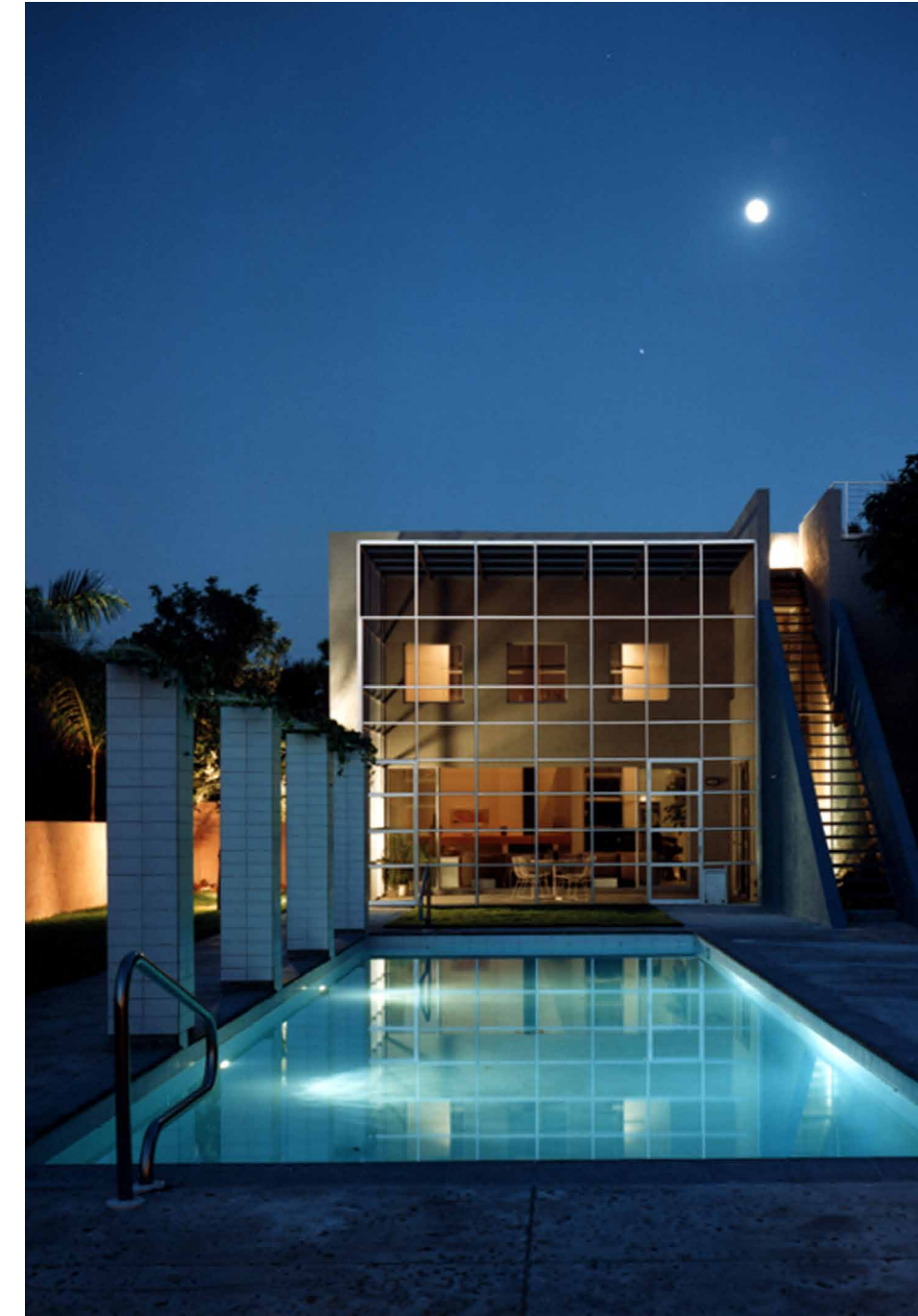
Oppenheim Architecture + Design is an architecture, interior design, and planning firm based in Miami with an office in Basel, Switzerland. With over 60 career distinctions, including over 45 AIA Awards, the firm's work is based on both a physical and spiritual contextual sensitivity, supported by evocative and economic design solutions. OA+D designs with sensitivity toward man and nature, harmonizing with the surroundings of each context.

The firm's projects, which span 25 countries, are crafted to establish the perfect balance between artistry and economics — timeless architecture that is as beautiful as it is functional. The firm specializes in mixed-use hotels and resorts, retail, commercial offices, and residential buildings worldwide that all serve to enhance life.

Oppenheim's large-scale built works include the elegant 50-story Ten Museum Park tower along the downtown Miami waterfront and the 1.6 million square foot multi-tower Net Metropolis commercial complex in Manila, which has the distinction of being the pilot project for the Filipino government's first ever national sustainable design program, developed in concert with the U.S. Green Building Council.

Chad Oppenheim's commitment to green architecture has made him a highly sought after global lecturer and adjunct professor of architecture at Florida International University. Oppenheim's Miami house, Villa Allegra, which is a direct reflection of his philosophies, was hailed in The New York Times as "a minimalist on a beach of excess."



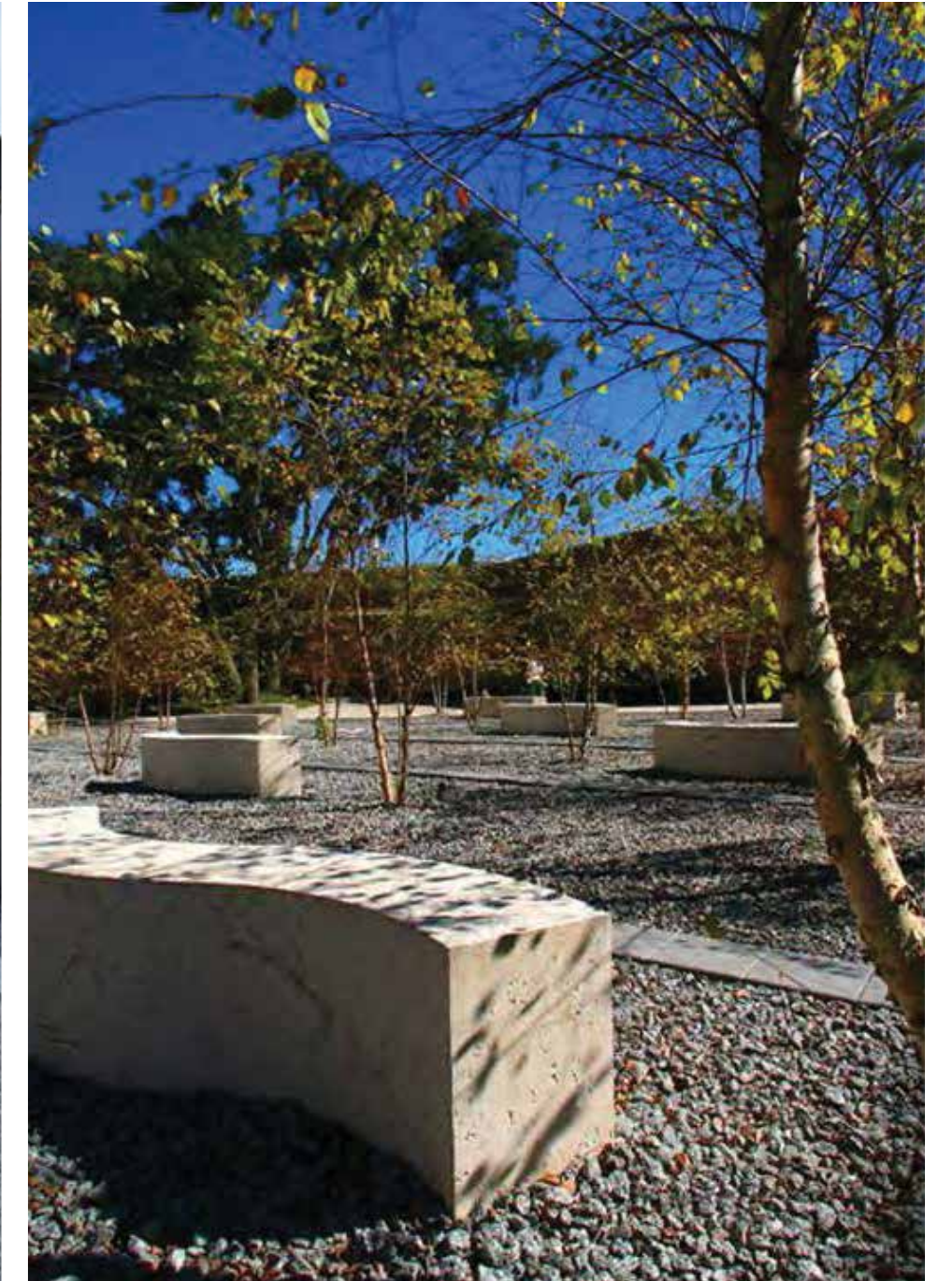


MATEU ARCHITECTURE

MATEU ARCHITECTURE SEEKS TO WORK WITH CLIENTS
WHO SHARE THE FIRM'S COMMITMENT TO DESIGN,
EXPERIMENTATION, AND CREATIVITY

Over the past 34 years, Roney J. Mateu, FAIA, president and director of design for MATEU Architecture, Inc., has received over 65 Awards for Excellence in Design from the American Institute of Architects and has been recognized as one of Florida's leading design architects. His design work, which has been featured in *Abitare*, *Progressive Architecture*, *Architectural Record*, *House and Garden*, and *Metropolitan Home*, among other leading publications, includes project experience in residential, commercial, institutional, industrial, and educational projects throughout Florida and the Caribbean.

Mateu has been an adjunct professor in the School of Architecture at the University of Miami, Florida International University, and Miami-Dade College. He has also served on numerous design award juries throughout Florida and the Caribbean, and he has served as a juror on international awards for the AIAS. MATEU Architecture, Inc. was selected as 2014 "Firm of the Year" by The Florida Association of the American Institute of Architects for its outstanding achievements in design, community service, education, service to the profession and the AIA.



STUDIO JEFRE

JEFRE CREATES DESIGN SOLUTIONS THAT ORIGINATE
IN A DEEP UNDERSTANDING OF THE HISTORICAL,
ENVIRONMENTAL, AND SOCIAL CONTEXT OF THE SITE

Established in 2008, STUDIO JEFRE is a sophisticated boutique design studio that specializes in environmental art and couture landscapes. Founder and principal JEFRE has taken on a wide range of projects, including community design, public art, parks and plazas, sculpture, temporary installations, interior design, avant-garde landscapes, corporate celebrity events, eco-installations, and campus planning. He has participated in a myriad of international design competitions and has created temporary design installations across the United States.

Constantly seeking out new and innovative approaches, JEFRE remains on the cutting edge of modern design, keenly incorporating the latest technologies, materials, and textures to create unique, eco-based, artistically resonant, and site-specific work. He has been awarded commissions in Washington DC, London, Abu Dhabi, Australia, Bering Strait, Rome, Miami, Philadelphia, Portland and Arlington. JEFRE has been featured in numerous publications including ELLE, Dwell, and House and Garden and was honored in 2007 as one of the Faces of Design in Inside Out Architecture magazine.

V STARR

FOUNDED BY INTERNATIONAL TENNIS CHAMPION VENUS WILLIAMS, V STARR CREATES STRIKING INTERIOR DESIGN SPACES THAT ARE IMMEDIATELY BREATHTAKING FROM THE MOMENT YOU ENTER, YET EMINENTLY LIVABLE

Founded by international tennis champion Venus Williams, V Starr is a full-service commercial and residential design firm that works closely with clients from the drawing board to project execution to create fresh and distinctive environments. The firm's history of excellence reflects the championship vision of Venus, who is known for her on-the-court style and grace. Venus' signature style and fresh perspectives guide the firm's captivating designs.

V Starr's vision is to create exceptional environments for clients that meet their unique project specifications, whether for a private residence, a hotel, or a retail space. The company's talented designers don't simply design for design's sake; instead they design for the residents, customers, employees, and visitors who will use the space long after the design is completed. Simply put, V Starr places people at the center of its work.

Indeed, V Starr's philosophy is rooted in the firm belief that relationships are what create success. It works closely with every client to create synergistic, timeless design that will meet clients' objectives today and grow with them into the future. Like life and business, design is constantly moving and changing. V Starr understands that no two clients are alike, and what worked 10 years ago may not suit current needs.

Since 2002, clients nationwide and around the world have turned to V Starr to successfully translate their dreams into realities. Whether it's the design of a single room or an entire commercial property, every client receives V Starr's cutting-edge creativity and meticulous attention to detail. As founder and CEO, Venus works to ensure that the V Starr mission, philosophy, vision, values, and design standards are delivered with the utmost integrity.





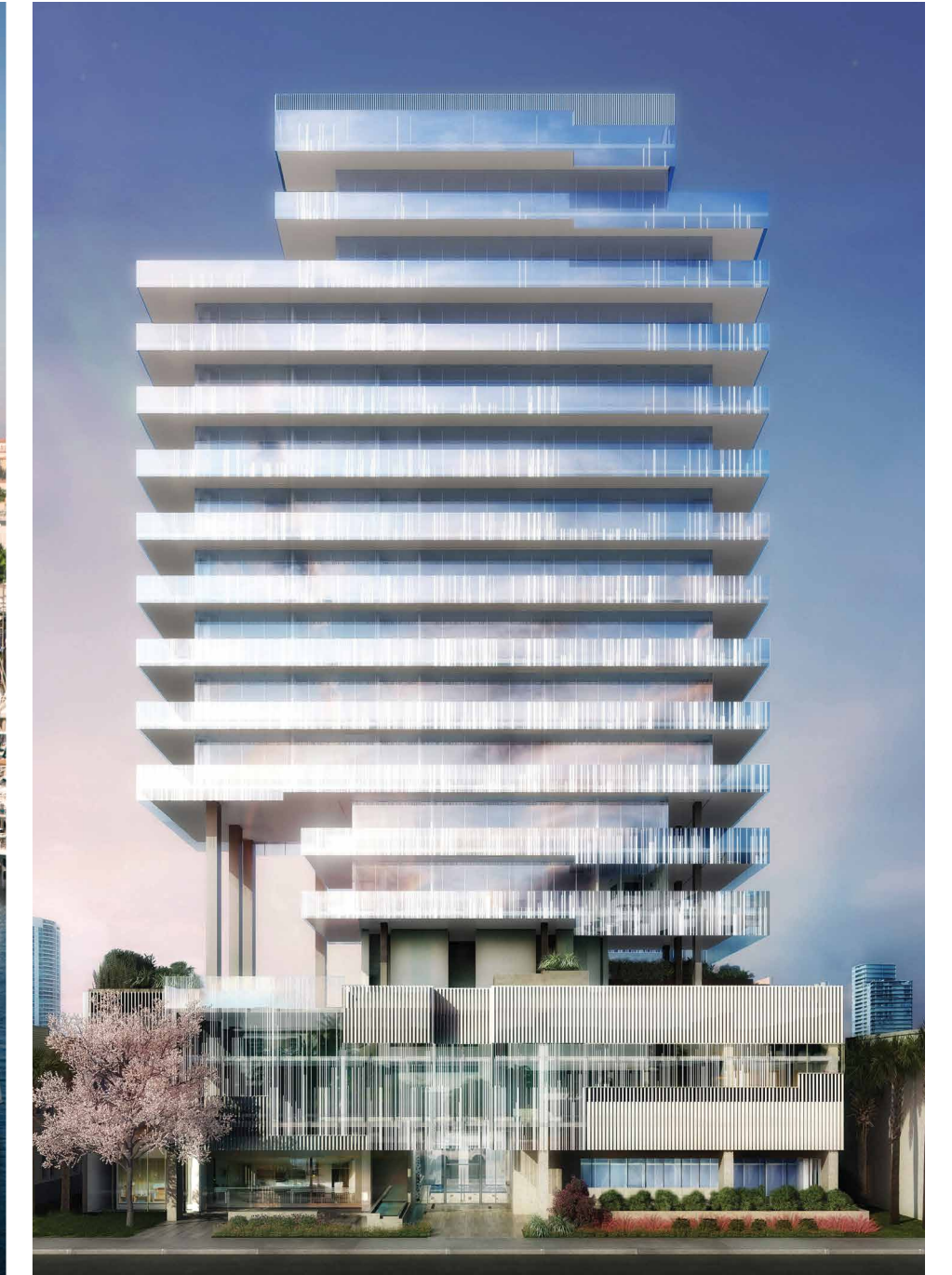
TERRA GROUP

AWARD-WINNING REAL ESTATE DEVELOPMENT FIRM
TERRA GROUP IS WELL KNOWN FOR VISIONARY PROJECTS



Terra Group, founded by Pedro Martin and David Martin, has become known for its founders' passion for the quality of the projects that speak to their imagination and visions of a new South Florida. The award-winning, Miami-based real estate development company carefully chooses projects that will have a positive impact on their surroundings and, by extension, on the people who live there.

Terra Group, over the past 15 plus years, has built over 4 million square feet of high end residential, commercial, land, and mixed use projects, carefully assembling multidisciplinary teams of accomplished leaders in their respective fields including architects, designers, engineers, and builders.



Among its well-known projects are GLASS in Miami Beach, Grove at Grand Bay & Park Grove in Coconut Grove, Modern Doral, Terra Ranches, Atlantic 15 in Sunny Isles, 900 Biscayne Bay, Quantum on the Bay & Metropolis at Dadeland.

Terra Group continues to lead the way in how people are able to live and work, creating new and innovative methods for the urban and suburban landscape to evolve. Terra Group's strong commitment to South Florida is underscored by the company's active role in charitable, civic, arts, and cultural organizations.

WE ARE PLEDGED TO THE LETTER AND SPIRIT OF THE U.S. POLICY FOR ACHIEVEMENT OF EQUAL HOUSING OPPORTUNITY THROUGHOUT THE NATION. WE ENCOURAGE AND SUPPORT AN AFFIRMATIVE ADVERTISING AND MARKETING PROGRAM IN WHICH THERE ARE NO BARRIERS TO OBTAINING HOUSING BECAUSE OF RACE, COLOR, RELIGION, SEX, HANDICAP, FAMILIAL STATUS OR NATIONAL ORIGIN.

This is not intended to be an offer to sell, or solicitation to buy, condominium units to residents of any jurisdiction where prohibited by law, and your eligibility for purchase will depend upon your state of residency. This offering is made only by the prospectus for the condominium and no statement should be relied upon if not made in the prospectus. The sketches, renderings, graphic materials, plans, specifications, terms, conditions and statements contained in this brochure are proposed only, and the Developer reserves the right to modify, revise or withdraw any or all of same in its sole discretion and without prior notice. All improvements, designs and construction are subject to first obtaining the appropriate federal, state and local permits and approvals for same. These drawings and depictions are conceptual only and are for the convenience of reference and including artists renderings. They should not be relied upon as representations, express or implied, of the final detail of the residences or the Condominium. The developer expressly reserves the right to make modifications, revisions, and changes it deems desirable in its sole and absolute discretion. All depictions of appliances, counters, soffits, floor coverings and other matters of detail, including, without limitation, items of finish and decoration, are conceptual only and are not necessarily included in each Unit. The photographs contained in this brochure may be stock photography or have been taken off-site and are used to depict the spirit of the lifestyles to be achieved rather than any that may exist or that may be proposed, and are merely intended as illustrations of the activities and concepts depicted therein. Consult your Agreement and the Prospectus for the items included with the Unit. Dimensions and square footage are approximate and may vary with actual construction. The project graphics, renderings and text provided herein are copyrighted works owned by the developer. All rights reserved. Unauthorized reproduction, display or other dissemination of such materials is strictly prohibited and constitutes copyright infringement. No real estate broker is authorized to make any representations or other statements regarding the projects, and no agreements with, deposits paid to or other arrangements made with any real estate broker are or shall be binding on the developer. All prices are subject to change at any time and without notice, and do not include optional features or premiums for upgraded units. From time to time, price changes may have occurred that are not yet reflected on this brochure. Please check with the sales center for the most current pricing.

